



Reporting Module

Ignition HMI/SCADA Software

Now it's easier than ever to make and distribute dynamic, professional reports in Ignition. The Ignition Reporting Module is a standalone reporting solution that simplifies and enhances the reporting process from beginning to end. Generate reports from existing files or create them from scratch. Pull data from a variety of sources, and design reports with a simple-to-use interface. Add charts, graphs, tables, crosstabs, shapes, and other components for visual impact. Save your reports in PDF, HTML, CSV, and RTF file formats, and set up automatic scheduling and delivery.

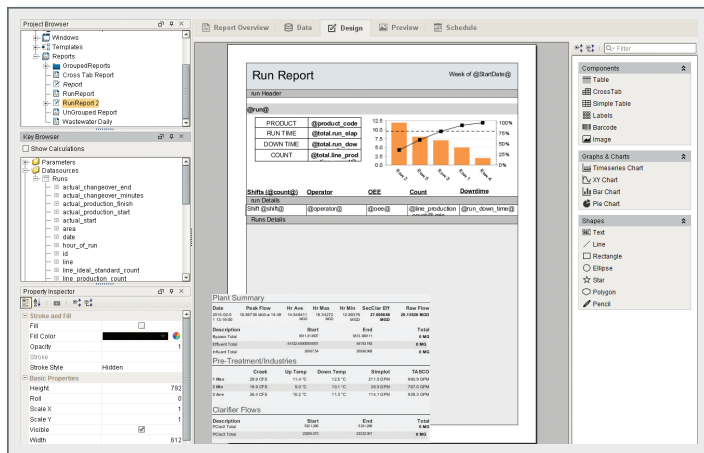
Use all of these powerful capabilities to quickly create many common types of reports such as production management, efficiency monitoring, downtime tracking, SPC, QA, OEE management, and historical data analysis.

Select Data from Many Sources

The Reporting Module makes it easy to define the data behind your reports. Specify any number of report parameters and data sources in your reports. Access information from any SQL database. Also, you can also easily query data from Ignition's tag historian and event data from the alarm journal.

Design Reports with an Easy-to-Use Interface

Design your reports easily inside Ignition's Designer application. The interface is far more user-friendly than those of other reporting software, because it enables you to design reports with the same intuitive feel and rapid application development tools that you get when designing applications in Ignition. This allows you to design your reports using the drag-and-drop method.



Design user-friendly reports with rapid application development tools.

Features

- Select Data from Many Sources
- Easy-to-Use Interface
- Schedule Reports to Run Automatically
- Print, Save, or Send Automatically
- Powerful Query Tools
- Additional Features
- Powered by Ignition

Supported Operating Systems

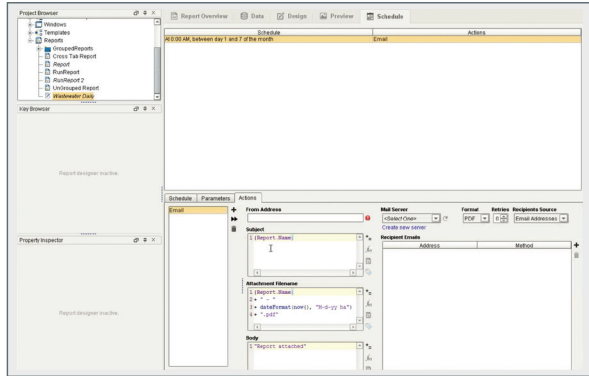
- Windows Server 2008/2012/2016
- Windows 7, 8, and 10
- Ubuntu Linux 12.04 or later
- Other Java SE-enabled OSes²

Supported Databases

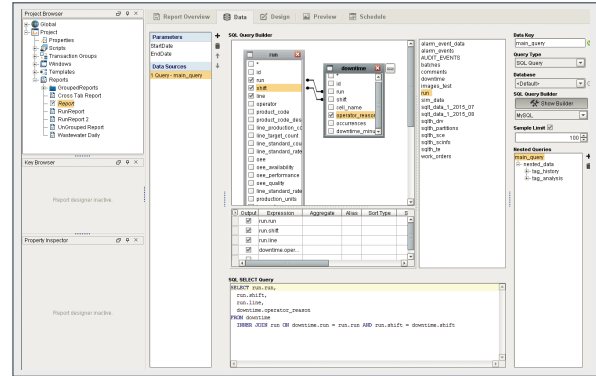
- Microsoft® SQL Server
- MySQL
- Oracle
- PostgreSQL

Requirements

- Ignition v7.8
- Java SE 8 (server)
- Java SE 6/7/8 (client)
- 1024 MB RAM
- 1 GB free HD space
- (Requirements vary by usage)



Schedule reports on-demand within the Ignition Gateway.



Build complex SQL queries by using drag-and-drop.

Schedule Reports to Run Automatically

The Reporting Module allows you to schedule reports within the Ignition Gateway. You can schedule a report to run on a regular basis; for example, on every Monday at 5:00 p.m. Then, your report will run as scheduled whether or not any Ignition clients are open.

You also have the option to set up triggered execution, which means that reports run on-demand when triggered by an event such as a tag change, a shift change, the finish of a production run, etc.

Print, Send, or Save Automatically

Scheduled reports can be automatically delivered in many ways: print, email, save to a file server, upload to an FTP server, or use scripting to customize the method of delivery. Have your reports distributed in the way you want, every time, automatically.

Powerful Query Tools

The Reporting Module has a powerful drag-and-drop query interface that allows you to build complex SQL queries easily. The new query structure allows you to create complex nesting which can correlate relational data and process-historian data in a seamless fashion.

Additional Features

- Powerful report pagination engine
- Backwards-compatible for reports created in previous versions
- Preview mode
- And more

Powered by Ignition

The Reporting Module is a SCADA module for Ignition, the powerful HMI, SCADA, and MES software from Inductive Automation. The Reporting Module integrates seamlessly with Ignition and with all other Ignition modules. Because the module is built upon the power of Ignition, it shares the same advantages, such as cross-platform compatibility, unlimited free clients, robust SQL-database support, and fast installation. Leveraging the full power of Ignition, the Reporting Module is unmatched by any other SCADA reporting product on the market.